

**ITEM 32. CAR SHARE – BINDON PLACE ZETLAND**

**TRIM RECORD NO: 2016/129450**

**RECOMMENDATION**

It is recommended that the Committee endorse the reallocation of parking on the eastern side of Bindon Place, Zetland, between the points 40.1 metres and 45.1 metres (one car space) south of Defries Avenue as “No Parking Car Share Vehicles Excepted” subject to the following:

- (A) The City will only install signage for the car share space when GoGet has a car to occupy the space.

**VOTING MEMBERS FOR THIS ITEM**

<b><i>Voting Members</i></b>	<b><i>Support</i></b>	<b><i>Object</i></b>
City of Sydney		
Roads and Maritime Services		
NSW Police – Redfern LAC		
Representative for the Member for Heffron		

**DECISION**

**BACKGROUND**

The City is committed to providing dedicated parking for car sharing across the Local Government Area as part of a Council approved Car Share Policy. A submission has been received from GoGet for a car share space in Bindon Place, south of Defries Avenue.

**COMMENTS**

The kerb space on the eastern side of Bindon Place, Zetland between Defries Avenue and Southern Cross Drive is currently signposted as “4P 8am-6pm Mon-Fri”

The car share space will be installed and managed in accordance with the Roads and Maritime Service’s Technical Direction 2007/04 and the provisions of the Council-approved Car Share Policy.

Car sharing is popular in more than 600 cities worldwide, and research has shown substantial environmental benefits. Car sharing reduces total urban driving, reduces household vehicle holdings, and increases walking, cycling and public transport use.

On average, each car share vehicle in the City can replace up to 12 private vehicles that would otherwise compete for parking.

Current membership is approximately 29,069, of which 7,649 are business members.

As of March 2016, there were 121 GoGet car share members within a 250 metre radius of this location with 36 members in Defries Avenue, 13 members in Naulty Place, and 48 member in Bindon Place.

Within a 250 metre radius of this location, there are currently two spaces allocated for GoGet car share vehicles.

### **CONSULTATION**

The City consulted local residents and businesses in the area. There were 272 letters sent out with no responses supporting or opposing the proposal.

### **FINANCIAL**

Funds are available in the current budget.

### **ATTACHMENTS**

Car Share – Bindon Place Zetland

Claudia Calabro, Business Support Officer

**Defries Avenue**

KL 0.0 m

6.2 m  
(Two way street)

**Proposed**  
**"No Parking**  
**Car Share**  
**Vehicles**  
**Excepted"**  
**(1 parking space)**

**Existing**  
**"4P 8am – 6pm**  
**Mon – Fri"**

40.1 m

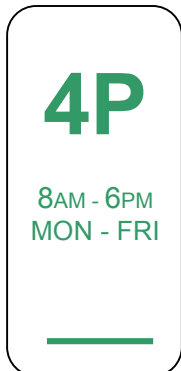
45.1 m

53.4 m

**Bindon Place**

**Existing**

**Proposed**

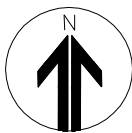


**4P - CA**

**CS - GG**

**Proposed Car Share Location (CS - GG)**
**No Stopping (existing) R5-400**

**4P 8am – 6pm Mon – Fri 4P - CA (Existing)**

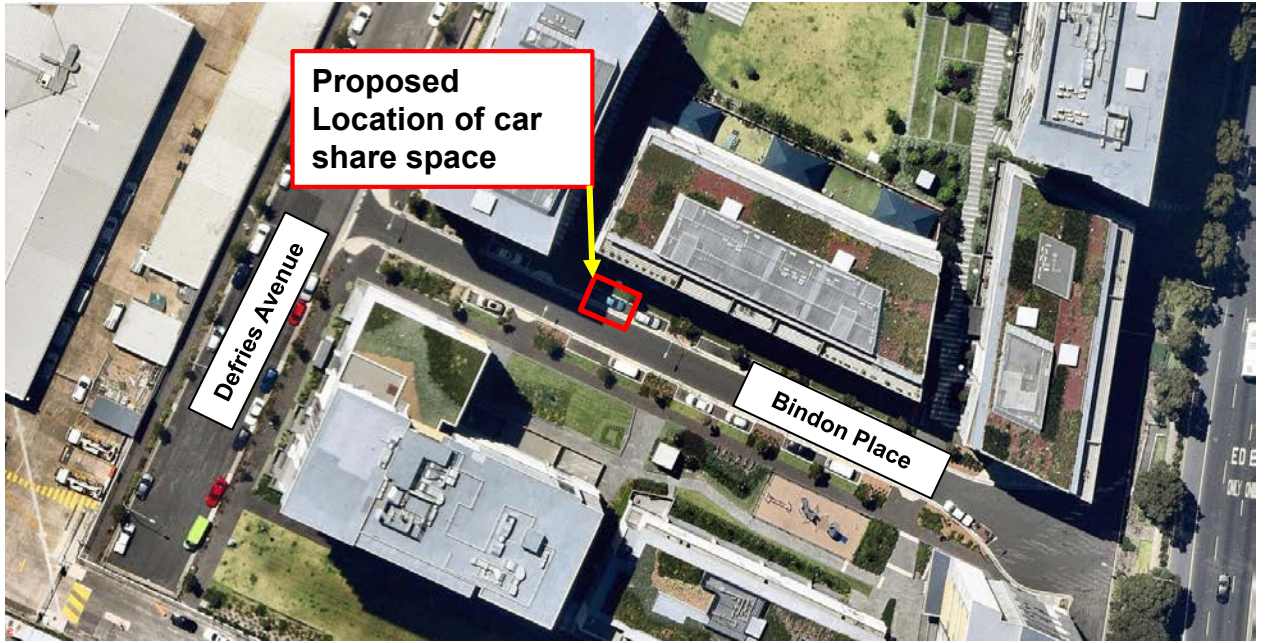


**Proposal**

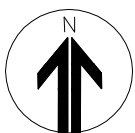
**PROPOSED CAR SHARE**

**BINDON PLACE ZETLAND**





Source: nearmap 18 March 2016



### Proposal

PROPOSED CAR SHARE  
BINDON PLACE ZETLAND

